

NuFlex® 333 AQUARIUM SILICONE SEALANT



NuFlex® 333 Aquarium Silicone Sealant is a 100% silicone, one-part, moisture curing sealant specifically formulated for use in the construction of aquariums. NuFlex® 333 is used to create aquariums in almost any shape where the view of the fish is unobstructed. Experts recommend the use of 6.4 mm (1/4") plate glass for most tanks up to 120 L (30 US gal.) because of their "clear vision" properties.

■ FEATURES

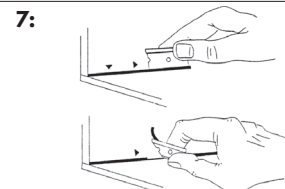
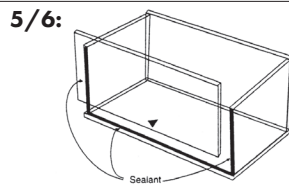
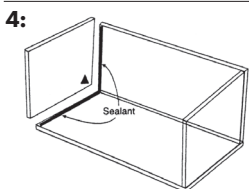
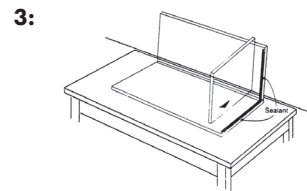
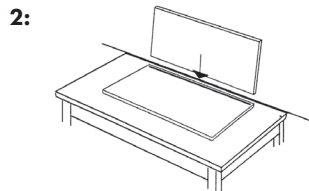
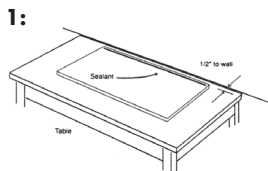
- Acetoxy cure
- 100% silicone with 50 year durability
- Water resistant before, during, and after curing
- RTV (Room Temperature Vulcanization)
- Strong adhesion to glass
- For aquariums up to 122 cm (48") in height with a volume no greater than 400 L (100 US gal.)
- Eliminates toxic poisoning of fish and plants which is common with metal frames & tanks made with toxic glues
- Does not shrink, dry out or crack

■ SURFACE PREPARATION & APPLICATION:

Before Use: It is important that the glass is purchased from a professional glass supplier and that it be cut and buffed to the exact size required. Any stains shall be removed by wiping with rubbing alcohol, rinsing with water, and drying with a paper towel. Do not use soap or detergent as they can be toxic to fish and will reduce sealant adhesion. It is important that you start assembly immediately as the sealant will begin to skin over within a few minutes (which can reduce adhesion).

Surface Preparation:

1. Place **BOTTOM** glass horizontally on a flat surface approximately 1/2" away from a 90° vertical surface and run a 1/4" bead of sealant along the edge closest to the vertical surface.
2. Place **BACK** glass panel onto the sealant and lean it against the vertical surface for support. **Do not apply pressure!** The weight of the glass will seat the glass. Don't worry about alignment as this will be done later.
3. Apply sealant down the edge of the **BACK** and **BOTTOM** glass. Lay in the **END** glass panel by bedding the lower edge into the bead of sealant followed by bringing the **BACK** panel into place. This begins the alignment process.
4. While firmly holding the back panel in place, Repeat step 3 with the other **END** glass panel.
5. Run a 1/4" bead of sealant along the remaining 3 edges of each **SIDE** and the **BACK** panels. Take the **FRONT** panel and gently, but firmly push it into place.
6. With all of the pieces in place, align all of the corners by applying even pressure to gently push all of the panels together. Leave a thin film between the surfaces. Once happy with the results, leave sealant for a minimum of 48 hours so it can cure.
7. Use a razor blade to cut away excess sealant from the surface of the panels. Do not cut into the sealant that is holding the panels together.
8. Apply a bead of silicone over each joint and tool it smooth. Let sealant cure for at least 24 hours before putting water into the tank.



NuFlex
SEALANTS

NuFlex® 333 AQUARIUM SILICONE SEALANT

SURFACE PREPARATION & APPLICATION (CONT):

Clean-up:

1. Uncured NuFlex® 333 silicone sealant cannot be removed with water.
2. Remove the bulk of the uncured sealant with a plastic scraper, being careful not to compress it into cracks or crevices.
3. Use a cloth saturated with mineral spirits, acetone, or denatured alcohol to wipe away any remaining silicone.
4. Clean surface with soap and water if possible.

Cure:

- Cure time is affected by humidity, degree of confinement, and cross-sectional thickness of the sealant.
- Sections up to 3.2 mm (1/8") thick become rubbery solids in 24 hours at 25°C (77°F) at 50% relative humidity.
- In applications where NuFlex® 333 may be partially or totally confined during cure, the time required for proper cure is generally lengthened by the degree of confinement. Every application involving confinement should be thoroughly tested before production procures.
- Curing time increases with the thickness of the sealant. A 12.7 mm (1/2") cross section for example, may require 3 or 4 days for complete cure. However, the cure will have penetrated the outer 3.2 mm (1/8") in about 24 hours.

TYPICAL PROPERTIES:

These values are not intended for use in preparing specifications. Spec Writers; please contact NUCO Inc. before writing specifications if any further information is required.

Description	Specification
As Supplied...	
Type:	One part silicone sealant
Cure method:	Acetoxy, moisture cure
Specific gravity:	1.01
Flow rate (sag or slump):	Nil
Tack-free time at 25°C (77°F) and 50% R.H.:	10-20 minutes
Cure time at 25°C (77°F) and 50% R.H., (3.2mm / 1/8" bead)	24 hours
As Cured - Physical - after 7 days at 25°C (77°F) and 50% relative humidity...	
ASTM C 611 - Durometer Hardness Shore A, points	25
ASTM D 412 Die C - Tensile Strength, MPa (psi):	2.24 (325)
ASTM D 412 Die C - Elongation, percent:	550

LIMITED WARRANTY INFO:

NUCO Inc., warrants only that its product will meet its specifications for a period of 12 months following date of manufacture. NUCO shall in no event be liable for incidental or consequential damage, or improper storage. NUCO's liability, expressed or implied is limited to the stated selling price of any goods found to be defective.

SPECIFICATIONS:

NuFlex® 333 Aquarium meets the following:

- CAN/CGSB-19.13-M87, Class MG-2-25 - A -L,
- ASTM C920, Type S, Grade NS, Class 25, use NT, G, A, O. U.S.
- U.S. Fed Specs TT-S-001543A and TT-S-00230C Type 2.

AVAILABLE SIZES & COLOURS:

SKU	Colour	Size	Format
33300	Clear	300 ml	Cartridge

Disclosure: The information and data contained herein is BASED ON INFORMATION WE BELIEVE TO BE RELIABLE. Please read all statements, recommendations or suggestions herein in conjunction with our CONDITIONS OF SALE which apply to all goods supplied by us. We assume no responsibility for the use of these statements, recommendations or suggestions, nor do we intend them as recommendation for any use which would infringe any patent or copyright.

LIMITATIONS:

- Use only on glass as NuFlex® 333 may corrode or stain other materials.
- Do not construct tanks which have a total volume greater than 400 L (100 US gal.) or max height in excess of 122 cm (48")
- Mechanical reinforcement must be used when volume is greater than 100 L (25 US gal.)

STORAGE AND SHELF LIFE:

- Shelf life is 24 months from the date of manufacture when stored in a clean, dry area.
- Store between 4° to 32°C (40° to 90°F).
- For best results, store the sealant in tightly closed containers

CAUTION:

- Use in well ventilated areas and avoid breathing vapours.
- On contact, uncured sealant irritates eyes. Flush eyes with lukewarm water. Call physician.
- Avoid skin contact and DO NOT ingest.
- Sealant releases acetic acid (odour similar to vinegar) during cure.
- Consult Safety Data Sheet.

50 YEAR DURABILITY STATEMENT:

Material will remain elastic in nature for 50 years. Independent tests indicate that silicone sealant will withstand outdoor weathering for 50 years without significant performance changes. This statement applies to the sealant itself and not to the substrates to which it is bonded to. In the event of elasticity failure, return original container and sales receipt to Nuco Inc. NUCO's liability, expressed or implied is limited to the stated selling price of any goods found to be defective.

MANUFACTURER INFORMATION:

NUCO Inc. 150 Curtis Drive
Guelph, ON N1K 1N5

T: 519-823-4994
F: 519-823-1099

TF: 1-800-853-3984
E: info@nucoinc.com

Last Edited: August 31, 2020

www.NUCOInc.com



NuFlex
SEALANTS

1-800-853-3984